



RSTA

LED INDUSTRIAL STRIP LIGHT

JOB INFORMATION

Type: _____
 Catalog No: _____
 Project Name: _____
 Comments: _____

 Prepared by: _____

RSTA

USE OF PRODUCT

The RSTA Series is a versatile linear strip luminaire designed to support a wide range of commercial, retail, warehouse, education, corridor, and general lighting applications. Field-selectable wattage and color temperature provide flexibility to accommodate varying project requirements while reducing inventory and simplifying specification. Available in multiple mounting configurations, the RSTA Series delivers uniform illumination, energy efficiency, and long-term reliability.

FEATURES

- Wattage Selectable:
 - 4 ft: 22W, 28W, 34W, 40W
 - 8 ft: 46W, 54W, 62W, 70W
- Color Temperature Selectable: 3500K, 4000K, 5000K
- Delivered Lumens: Up to 12,300 lumens
- Efficacy: Up to 154 lm/W
- CRI: 80+
- Color Consistency: ≤5 SDCM

HOUSING

Heavy-gauge formed steel housing provides exceptional strength and durability while maintaining a clean architectural appearance. Precision-engineered components are thermally managed to maximize LED and driver performance, ensuring long-term reliability. Available in 4 ft, and 8 ft lengths.

CONTINUOUS ROW

Fixtures may be joined in continuous runs using joiner brackets and internal quick-connect wiring for fast, secure, and seamless installation.

LED ENGINE

High-efficiency LED system delivers exceptional efficacy, uniform illumination, and long operating life. Field-selectable color temperature allows quick adjustment between 3500K, 4000K, and 5000K (80 CRI), providing efficacy up to 154 lm/W to accommodate a variety of application requirements.

OPTICS

Precision-engineered acrylic lens provides smooth, uniform illumination while minimizing glare and enhancing visual comfort. Designed to deliver broad, even light distribution for general ambient lighting applications.

ELECTRICAL

- Universal 120-277V, 0-10V dimmable driver standard.
- Power Factor >0.90.
- Total Harmonic Distortion (THD) <20%.
- Operating Temperature: -20°C to 40°C (-4°F to 104°F)
- Operating Temperature with Emergency Battery: 10°C to 40°C (50°F to 104°F)

MOUNTING

Available in a variety of mounting configurations including surface mount (standard), aircraft cable suspension, chain suspension, T-grid, and V-hook mounting.

CONTROLS

Optional plug-in PIR occupancy sensor or Bluetooth® smart control sensor available for additional energy savings. An integrated sensor receptacle allows for quick field installation without fixture modification.

EMERGENCY BATTERY

Optional integral 8W emergency battery provides approximately 900 lumens for a minimum of 90 minutes during power outages.

LIFESPAN

L70 >50,000 hours based on LM-80 testing and TM-21 projections.

LABELS/COMPLIANCE/WARRANTY

- UL and cUL listed
- Damp location listed
- Five (5) Year Limited Warranty.



ORDERING INFORMATION

Series	Length	Wattage	Color Temperature	Finish
RSTA	4FT - 4 ft Length	WS40 - Wattage Selectable (40W, 34W, 28, 22W) S40W - Wattage set at 40W S34W - Wattage set at 34W S28W - Wattage set at 28W S22W - Wattage set at 22W	3CTS - (3500K, 4000K, 5000K) S35K - Color temp. set at 3500K S40K - Color temp. set at 4000K S50K - Color temp. set at 5000K	W - White MTO - Made to Order
	8FT - 8 ft Length	WS70 - Wattage Selectable (70W, 62W, 54, 46W) S70W - Wattage set at 70W S62W - Wattage set at 62W S54W - Wattage set at 54W S46W - Wattage set at 46W		

- ### Mounting
- SM¹** - Surface Mount
 - CS** - Aircraft Cable
 - CH** - Chain Suspension
 - TG** - T-Grid Bracket

- ### Options
- MSI** - Standard PIR Motion Sensor Integral
 - EI8W** - Emergency Battery Integral 8W
 - CRB²** - Continuous Row Bracket

- ### Notes
1. Standard Mounting
 2. Must add CRB for the continuous row configurations. Quantity required is equal to the total number of fixtures in the row minus one (N-1).



RSTA

LED INDUSTRIAL STRIP LIGHT

PERFORMANCE CHART

RSTA-4FT-WS40

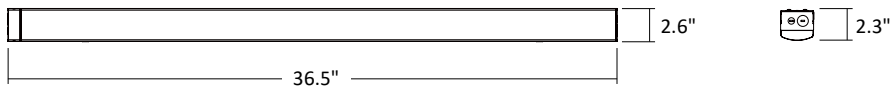
SYSTEM WATTS	3500K (80+CRI)		4000K (80+CRI)		5000K (80+CRI)	
	LUMENS	LPW	LUMENS	LPW	LUMENS	LPW
40W	5540 lm	136 lm/W	5720 lm	143 lm/W	5600 lm	140 lm/W
34W	4726 lm	139 lm/W	4964 lm	146 lm/W	4828 lm	142 lm/W
28W	3976 lm	142 lm/W	4172 lm	149 lm/W	4060 lm	145 lm/W
22W	3190 lm	145 lm/W	3366 lm	153 lm/W	3256 lm	148 lm/W

RSTA-8FT-WS70

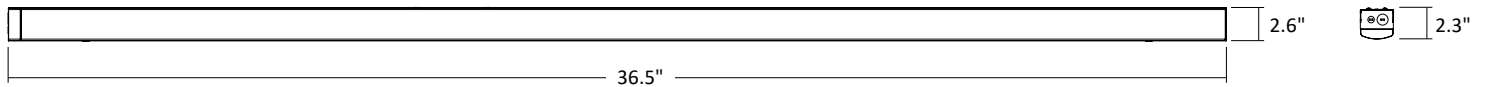
SYSTEM WATTS	3500K (80+CRI)		4000K (80+CRI)		5000K (80+CRI)	
	LUMENS	LPW	LUMENS	LPW	LUMENS	LPW
70W	9520 lm	136 lm/W	10010 lm	143 lm/W	9800 lm	140 lm/W
62W	8618 lm	139 lm/W	9052 lm	146 lm/W	8866 lm	143 lm/W
54W	7668 lm	142 lm/W	8100 lm	150 lm/W	7884 lm	146 lm/W
46W	6716 lm	146 lm/W	7084 lm	154 lm/W	6900 lm	150 lm/W

DIMENSIONS

4FT STRIP LIGHT



8FT STRIP LIGHT



RSTA

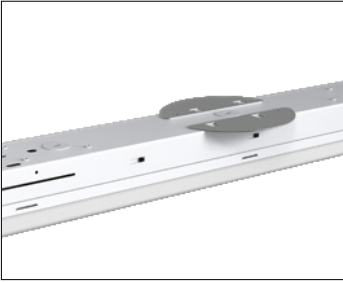
LED INDUSTRIAL STRIP LIGHT

CONTINUOUS ROW



MOUNTING

SM - Surface Mount



CM - Aircraft Cable Suspension



CH - Chain Suspension



TG - T-Grid Bracket



OPTIONS

MSI - Standard PIR Motion Sensor Integral



EI8W - Emergency Battery Integral 8W

